

## **GUIDELINES FOR AUTHORS PREPARING MANUSCRIPTS FOR PUBLICATION IN THE GEO-SIBERIA CONFERENCE PROCEEDINGS**

### ***Anzhelika T. Kamza***

Kazakh National Technical University named after K. I. Satpayev, 22, Satpayev St., Almaty, 050013, Kazakhstan Republic, Ph. D. Student, Senior GIS Specialist, phone: (707)451-48-20, e-mail: anzhelikakamza@gmail.com

### ***Irina A. Kuznetcova***

JSC "International Educational Corporation", 28, Ryskulbekova St., Almaty, 050043, Kazakhstan Republic, Associate Professor, phone: (777)257-55-95, e-mail: docent61@list.ru

### ***Eugene Levin***

Michigan Technological University, 1400 Townsend Drive Houghton, MI 49931, D. Sc., Head of Department of Applied Geodesy, Surveying Engineering Integrated Geospatial Technology Graduate Program Director, Digital Mapping Enterprise Adviser, School of Technology, phone: (906)487-244, e-mail: eleven@mtu.edu

These guidelines are provided for preparation of papers accepted for publication in the series of volumes of the GEO-Siberia conference proceedings. These guidelines are issued to ensure a uniform style. All papers that are accepted by the relevant scientific committee will be published provided they arrive by the due date and they correspond to these guidelines. Reproduction is made directly from author-prepared manuscripts, in electronic or hardcopy form. To assure timely and efficient production of the proceedings with a consistent and easy to read format, authors must submit their manuscripts in strict conformance with these guidelines. The scientific committee may omit any paper that does not conform to the specified requirements. There will be no opportunity for corrections or improvements of poorly prepared originals.

**Key words:** manuscript, proceedings, guidelines for authors, styleguide.

## **ШАБЛОН И ИНСТРУКЦИЯ ДЛЯ ПОДГОТОВКИ СТАТЬИ К ОПУБЛИКОВАНИЮ В СБОРНИКЕ ТРУДОВ МЕЖДУНАРОДНОГО НАУЧНОГО КОНГРЕССЕ ГЕО-СИБИРЬ**

### ***Анжелика Таласовна Камза***

Казахский национальный технический университет им. К. И. Сатпаева, 050013, Республика Казахстан, г. Алматы, ул. Сатпаева, 22, аспирант, старший специалист по ГИС, тел. (707)451-48-20, e-mail: anzhelikakamza@gmail.com

### ***Ирина Александровна Кузнецова***

АО «Международная образовательная корпорация», 050043, Республика Казахстан, г. Алматы, ул. Рыскулбекова, 28, доцент, тел. (777)257-55-95, e-mail: docent61@list.ru

### ***Евгений Левин***

Мичиганский технологический университет, Институт технологии, 1400 Townsend Drive, Хoughton, MI 49931, США, доктор наук, зав. кафедрой прикладной геодезии, сертифицированный фотограмметрист, школа технологий, e-mail: eleven@mtu.edu

Настоящее руководство предназначено для подготовки научных статей, принятых к опубликованию в сборниках научных трудов международного научного конгресса ГЕО-Сибирь.

Шаблон разработан для обеспечения однообразия публикуемых в сборниках научных статей. Все одобренные научным комитетом конгресса статьи будут опубликованы в случае, если они полностью соответствуют данному шаблону и направлены в адрес научного конгресса не позднее даты, указанной в информационных письмах и на сайте конгресса. Статьи публикуются в авторской редакции в электронной и бумажной версиях. В целях соблюдения сроков опубликования научных статей и качества графических материалов, авторы обязаны предоставить статью, оформленную в строгом соответствии с настоящим шаблоном и инструкцией. Научный комитет вправе отклонить принятую к опубликованию научную статью, если она не соответствует требованиям, предъявляемым к её содержанию и оформлению.

**Ключевые слова:** статья, сборник трудов, инструкция для авторов, шаблон.

## *Manuscript*

### General Instructions

The maximum paper length is restricted to 8 pages. Invited papers can be increased to 12 pages. The paper should have the following structure:

1. Title of the paper
2. Authors and affiliation
3. Abstract (100–250 words)
4. Keywords (5–7 words)
5. Introduction
6. Main body
7. Conclusions
8. Acknowledgements (if applicable)
9. References
10. Appendix (if applicable)

### Page Layout, Spacing and Margins

The paper must be compiled in one column for the Title, Abstract all subsequent text. All text should be single-spaced, unless otherwise stated. Left and right justified typing is preferred.

### Length and Font

All manuscripts, except Invited Papers are limited to a size of no more than eight (8) single-spaced pages (A4 size), including abstracts, figures, tables and references. Invited papers are limited to 12 pages. The font type for the title of the paper is Arial, for authors, affiliations, abstract, key words, references, and appendix is Times New Roman with a size of twelve (12) points; for the introduction, main body, conclusions, and acknowledgements is Times New Roman with a size of fourteen (14) points.

Setting	A4 size paper	
	mm	inches
Top	20	0.8
Bottom	27	1.08
Left	20	0.8
Right	20	0.8

Table 1. Margin settings for A4 size paper

### ***Title and abstract block***

#### Title

The title should appear centered to the left side in bold capital letters, at the top of the first page of the paper with a size of twelve (12) points and single-spacing. After one blank line, type the author(s) name(s) in bold letters, affiliation and mailing address (including e-mail) in upper and lower case letters, left and right justified under the title. In the case of multi-authorship, group them by firm or organization as shown in the title of these Guidelines.

#### Abstract

Leave one blank line under the key words. Then start the abstract followed by one blank line (100–250 words) which presents briefly the content and very importantly, the news and results of the paper in words understandable also to non-specialists.

#### Key Words

Type "Key words:" in bold letters, followed by 5–7 key words. Include those key words that you would use to find a paper with content you are preparing.

### ***Main body of the text***

Type text single-spaced, with one blank line between paragraphs and following headings. Start paragraphs flush with left and right margin.

#### Headings

Major headings are to be centered, in bold italic letters without underlining, after one blank line and also followed by one blank line.

Type subheadings flush with the left margin. Subheadings are placed on a separate line between two single blank lines.

Subsubheadings are to be typed in italic upper and lower case letters after one blank line flush with the left and right margin of the page, with text following on the

same line. Subsubheadings may be followed by a period, or may also be the first word of the paragraph's sentence.

## Footnotes

Mark footnotes in the text with a number (1); use the same number for a second footnote of the paper and so on. Place footnotes at the bottom of the page, separated from the text above it by a horizontal line.

## Illustrations and Tables

*Placement.* Figures must be placed after one blank line in the appropriate location of the document, as close as practicable to the reference of the figure in the text. While figures and tables are usually aligned horizontally on the page, large figures and tables sometimes need to be turned on their sides. If you must turn a figure or table sideways, please be sure that the top is always on the left-hand side of the page.

*Captions.* All captions should be typed in upper and lower case letters, centered directly beneath the illustration with one blank line before and after them. Use single spacing if they use more than one line. All captions are to be numbered consecutively, e.g. Figure 1, Table 2, Figure 3.

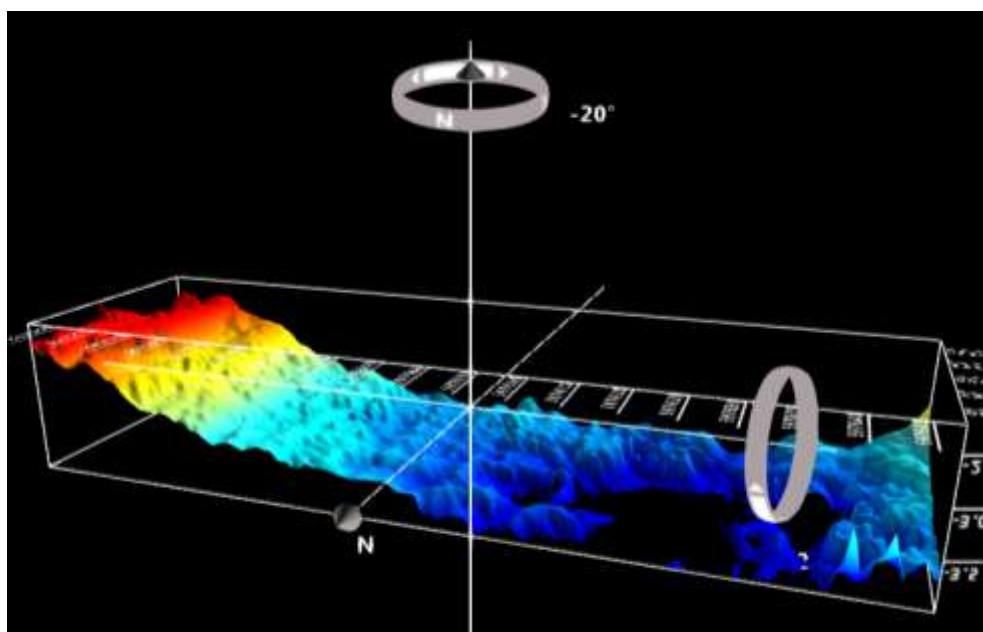


Figure 2. Digital seabed terrain model (cell size  $0.5 \times 0.5$  meters)

*Copyright.* If your article contains any copyrighted illustrations or imagery, please include a statement of copyright such as: © SPOT Image Copyright 20xx (fill in year), CNES. It is the author's responsibility to obtain any necessary copyright permission. After publication, your article is distributed under the Creative Commons Attribution 3.0 Unported License and you retain the copyright.

## Equations, Symbols and Units

*Equations.* Equations should be numbered consecutively throughout the paper. The equation number is enclosed in parentheses and placed flush right. Leave one blank line before and after equations:

$$x = x_0 - c \frac{X - X_0}{Z - Z_0} ; y = y_0 - c \frac{Y - Y_0}{Z - Z_0} , \quad (1)$$

where  $c$  = focal length

$x, y$  = image coordinates

$X_0, Y_0, Z_0$  = coordinates of projection center

$X, Y, Z$  = object coordinates.

*Symbols and Units.* Use the SI (Système Internationale) Units and Symbols. Unusual characters or symbols should be explained in a list of nomenclature.

## References

References should be cited in the text, thus [1], and listed in the order of appearance in the reference section.

### *Acknowledgements (optional)*

Acknowledgements of support for the project/paper/author are welcome.

## REFERENCES

1. Presidential Order of the Republic of Kazakhstan the State Program for the Development of the KSCS № 1095 dated May 16, 2003.
2. Nikiforov S. L., Koshel S. M., Sorokhtin N. O., Kozlov N. E. (2015). [Digital models of the bottom relief and some Cifroviemodeli relief dna I nekotorievozmozhnostiihormofometriceskogo analiza. possibilities of their morphometric analysis]. Vol 18, № 2, 287–294. [in Russian]
3. Kuznetcova I. A., Ligay V. V. (2010). AnalizeizmeneniyaurovnyaKaspiyskogo moray podannymgidrometeorologicheskoyberegovoistancii Aktau [Analysis of changes in the level of the Caspian Sea according to the data of the Aktau Sea Hydrometeorological Coastal Station]. In Sbornikmaterialov «Innovacionnyetechnologiisbora I obrabotkigeprostranstvennyhdannyhdlyaupravleniyaprirodnimiresursami. [Materials of the international conference "Innovative technologies for the collection and processing of geospatial data for the management of natural resources"], Ust-Kamenogorsk, 182–188 [in Russian].
4. Nikiforov S. L., Koshel S. M., Frol V. V., Popov O. E., Levchenko O. V. (2015). O metodahpostroeniya cifrovihmodeleidna (naprimereBelogoMorya). Oceanology, [On the methods of constructing digital bottom models (using the example of the White Sea)], Vol 55, № 2, 326–336. [in Russian]
5. Kuznetcova I. A., Kamza A. T. (2017). Postroyeniya cifroviemodeli relief morskogodna. [Building a digital model of the seabed relief]. Vestnik KAZGASA [Vestnik KAZLACE], Almaty, 1 (63), 109–115. [in Russian].
6. Hromovih V. V., Hromovih O. V. Cifroviemodelireliefa [Digital Terrain Model]. (2007). Tutorial. Tomsk. 5–7.

7. Chesapeake Technology, Inc 2010–2016. 2016. SonarWiz User Guide. User Guide, Chesapeake Technology.
8. Elhassan, Prof Ismat. 2015. "Bathymetric Techniques." FIG Working Week 2015. 17.
9. Firsov Yu. G. Osnovigidroakustiki I ispolzovaniyagidrographicheskikhsonarov.[Fundamentals of hydroacoustics and the use of hydrographic sonars]. (2010), Saint-Petersburg, 9–12. [in Russian].
10. IHO Standards for Hydrographic Surveys, International Hydrographical Organization, Special Publication № 44, 5<sup>th</sup> Edition, 2008, P24.
11. ESRI. 2017. Desktop ArcGIS. Accessed 10 3, 2017. <http://desktop.arcgis.com/en/arcmap/latest/extensions/maritime-bathymetry/essential-bathymetric-vocabulary.htm>.
12. A comparison of interpolation methods on the basis of data obtained from a bathymetric survey of Lake Vrana, Croatia HESSD 11, 13931–13979, 2014.
13. Citation: Hajam RA, Hamid A, Bhat S (2013) Application of Morphometric Analysis for Geo-Hydrological Studies Using Geo-Spatial Technology –A Case Study of Vishav Drainage Basin. Hydrol Current Res 4:157. doi: 10.4172/2157-7587.1000157.
14. Elhassan, Prof Ismat. 2015. "Bathymetric Techniques." FIG Working Week 2015. 17.

#### APPENDIX (optional)

Any additional supporting data may be appended, provided the paper does not exceed the limits given above.

© A. T. Kamza, I. A. Kuznetcova, E. Levin, 2020